

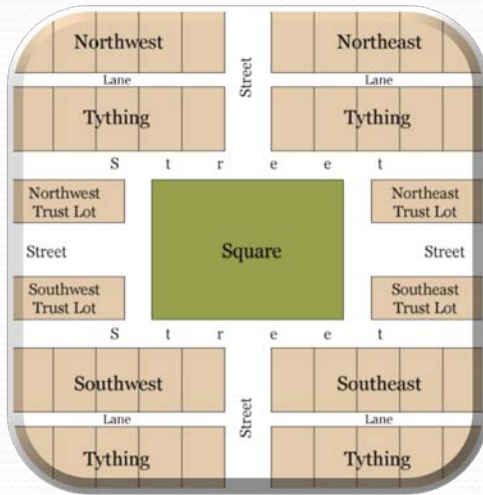


# *CORE Connections* 2035 Long Range

Association of Metropolitan Planning Organizations



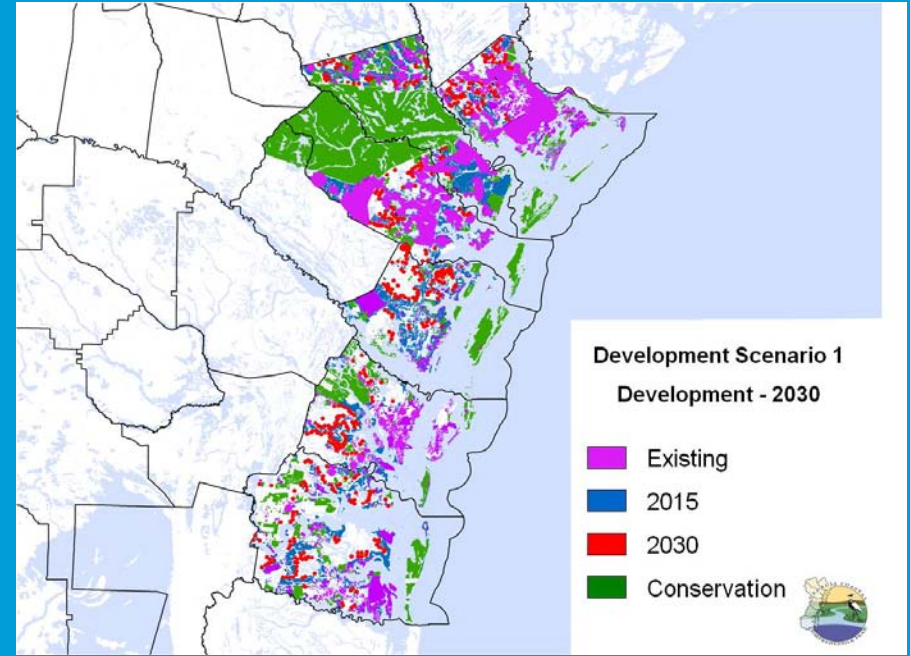
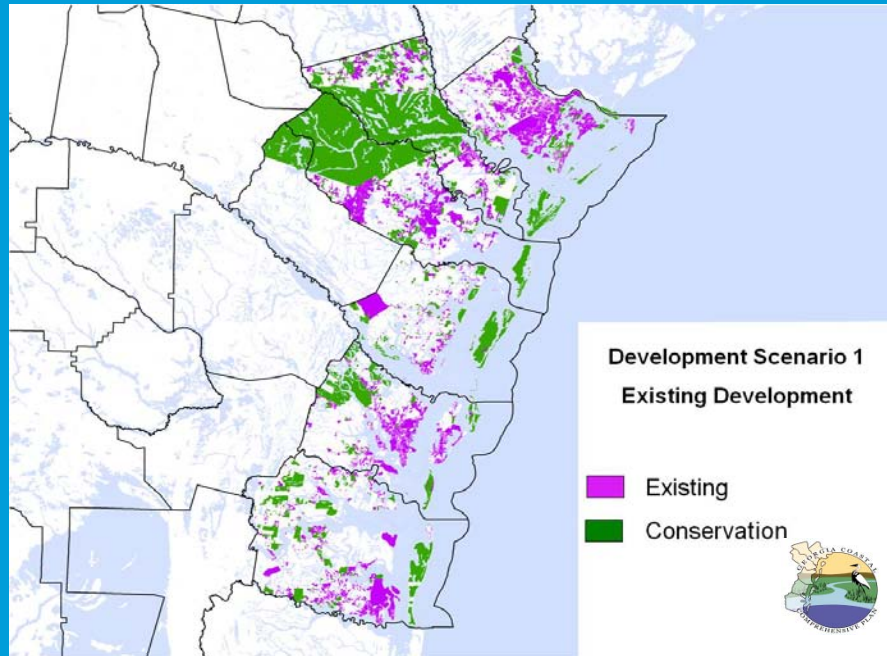
# Savannah – Chatham County



# Existing Development and Future Growth

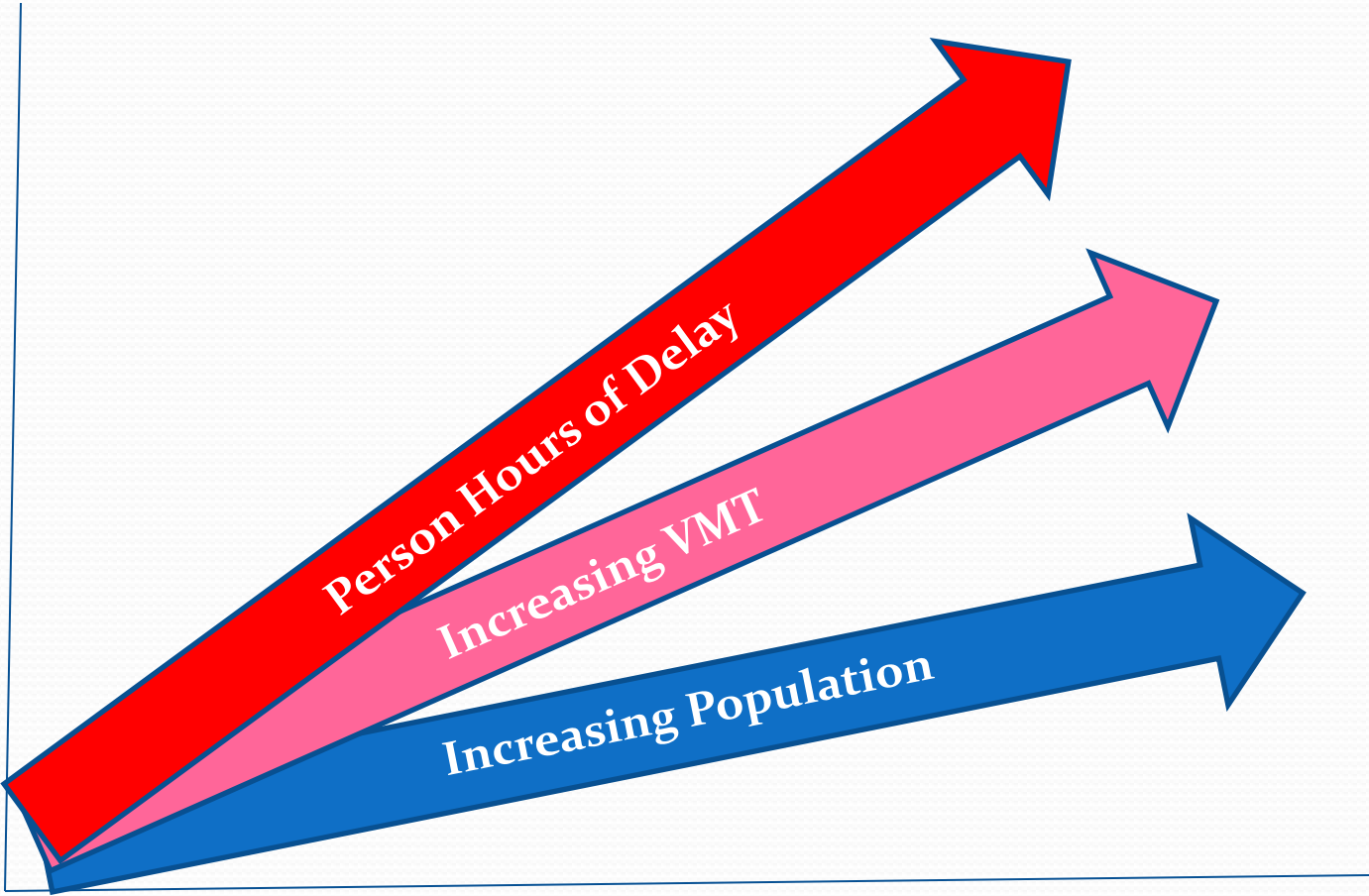
Existing

2030

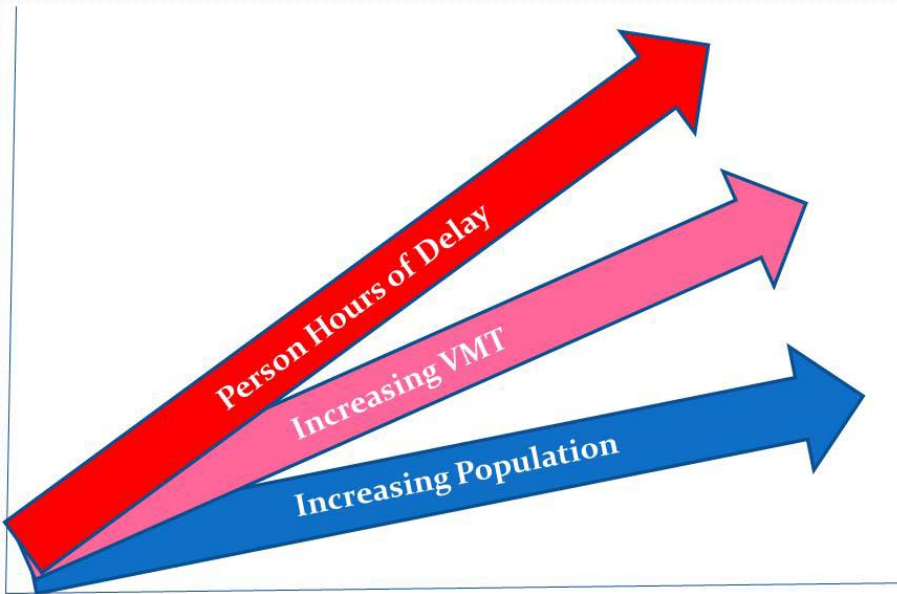


Source: Coastal Georgia Comprehensive Plan

# General Travel Trends



# WHY?



Land Use

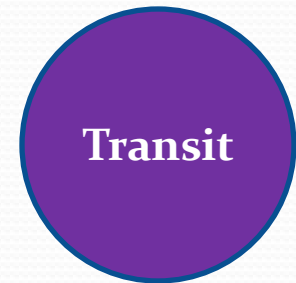
---

## Transportation

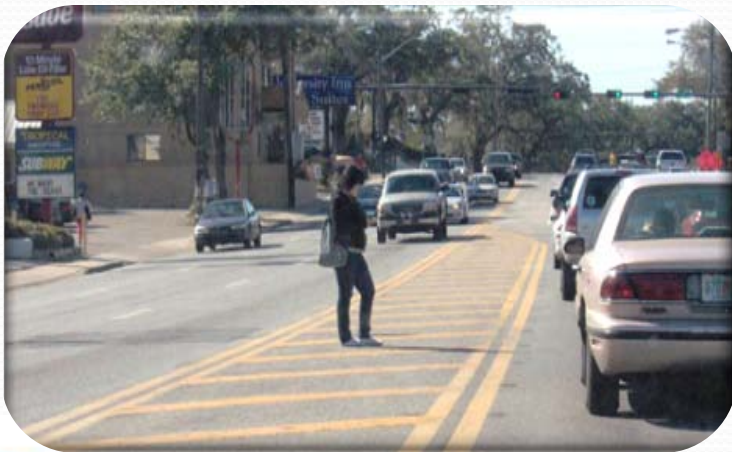


# CORE Connections 2035

- Previous Long Range Planning Efforts
  - Focus on moving vehicles quickly and efficiently
  - Planning separately for transportation components
  - Little to no consideration of land use
  - Short term solutions with long-term consequences



# If We Don't Change Course...



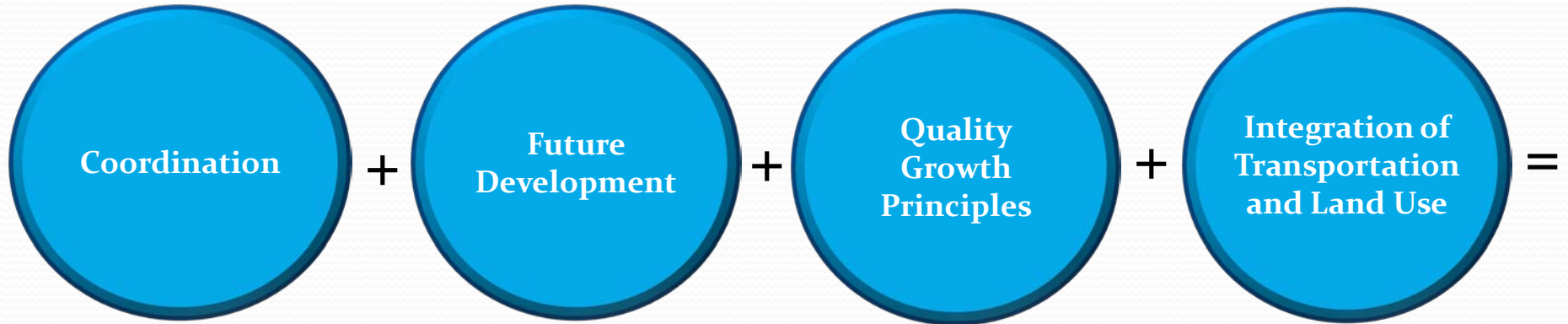
# CORE Connections 2035

- **Utilizes a New Approach**
- **Focus of the Plan**
  - Moving people and goods, not autos
  - Interconnectivity and local network
  - “Complete Streets” designed to provide access and mobility to all users
  - Initiate looking beyond the 20-year horizon (50+ year horizon)

# CORE Connections 2035

- Coordination with the myriad of transportation and visioning efforts
- Future growth and development patterns:
  - Where?
  - How?
- Incorporate quality growth principles
- Integration of transportation and land use

# CORE Connections 2035



## MOBILITY PLAN



# CORE Connections 2035

- Two Phases
  - Phase I - Framework Plan
  - Phase II - Mobility Plan
- Phase I: Framework Plan
  - Update Regional Goals
  - Meet SAFETEA-LU Requirements
  - Address Recent \ Anticipated Growth of Region



# CORE Connections 2035

- Phase II: Mobility Plan
  - Developed within the framework established in Phase I
  - Utilizes a comprehensive approach
    - Multi-modal approach focusing on accessibility and connectivity
    - Integrated transportation and land use strategies
    - Extensive public involvement and visioning



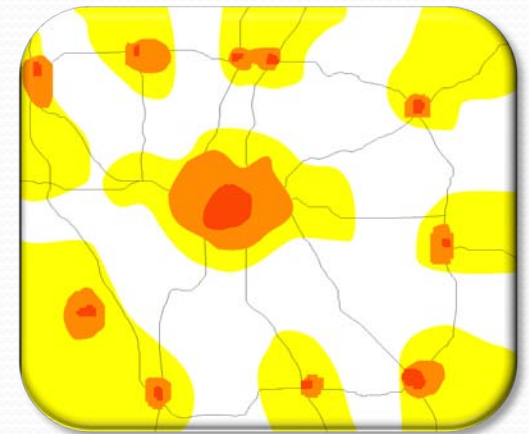
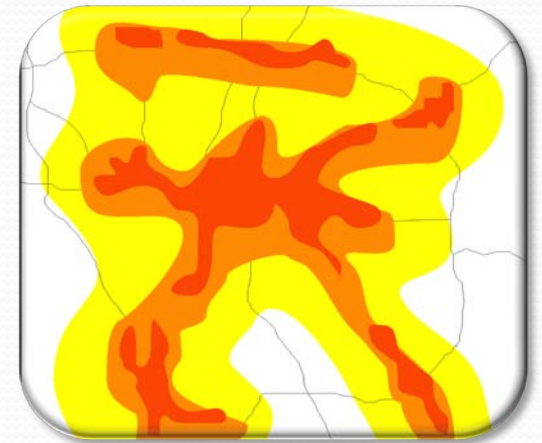
# CORE Connections 2035

- Phase II: Mobility Plan
  - Comprehensive Approach
    - Context sensitive design
    - Land use and corridor integration
    - Coordination with the Comprehensive Plan, zoning and development ordinances
    - Development of measurable performance measures
    - Includes scenario, sector and corridor planning



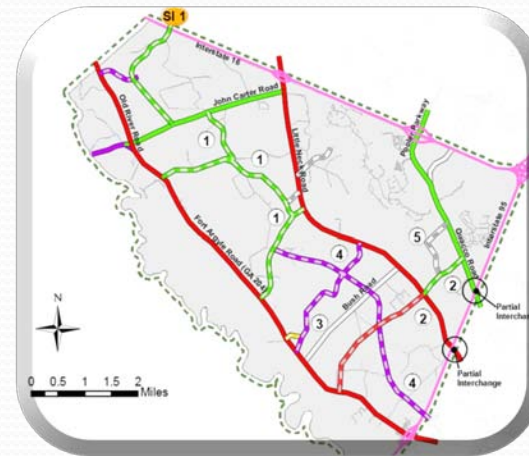
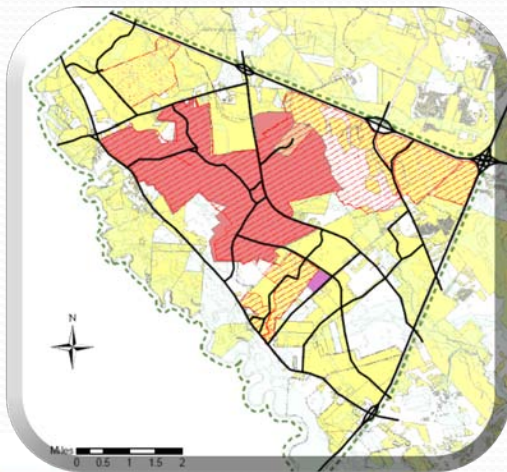
# CORE Connections 2035

- Scenario Planning
  - Conceptual
  - Broad look at infrastructure and development patterns
  - Build-out scenario



# CORE Connections 2035

- Sector Planning
  - Community character
  - Intrinsic resources
  - Recommendations and policy development



# CORE Connections 2035

- Corridor Planning
  - Identification of critical corridors through scenario and sector planning
  - Assessment of safety, access, operations, land use, modes, community character and context



# CORE Connections 2035

- Public Participation and Partner “Buy – In”
  - Critical element to include stakeholders and the public
  - Students, elderly, traditionally underserved



# CORE Connections 2035

- Continuing coordination
  - Planning partners
  - Agencies and organizations
  - Local governments
- Development Community
  - Policies and incentives



# CORE Connections 2035

- Dynamic LRTP
  - Meets the mandated legislative requirements
  - Meets the goals of the communities
  - Meets the mobility needs of ALL users





# QUESTIONS?

